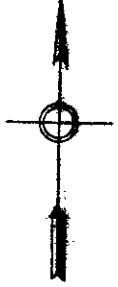
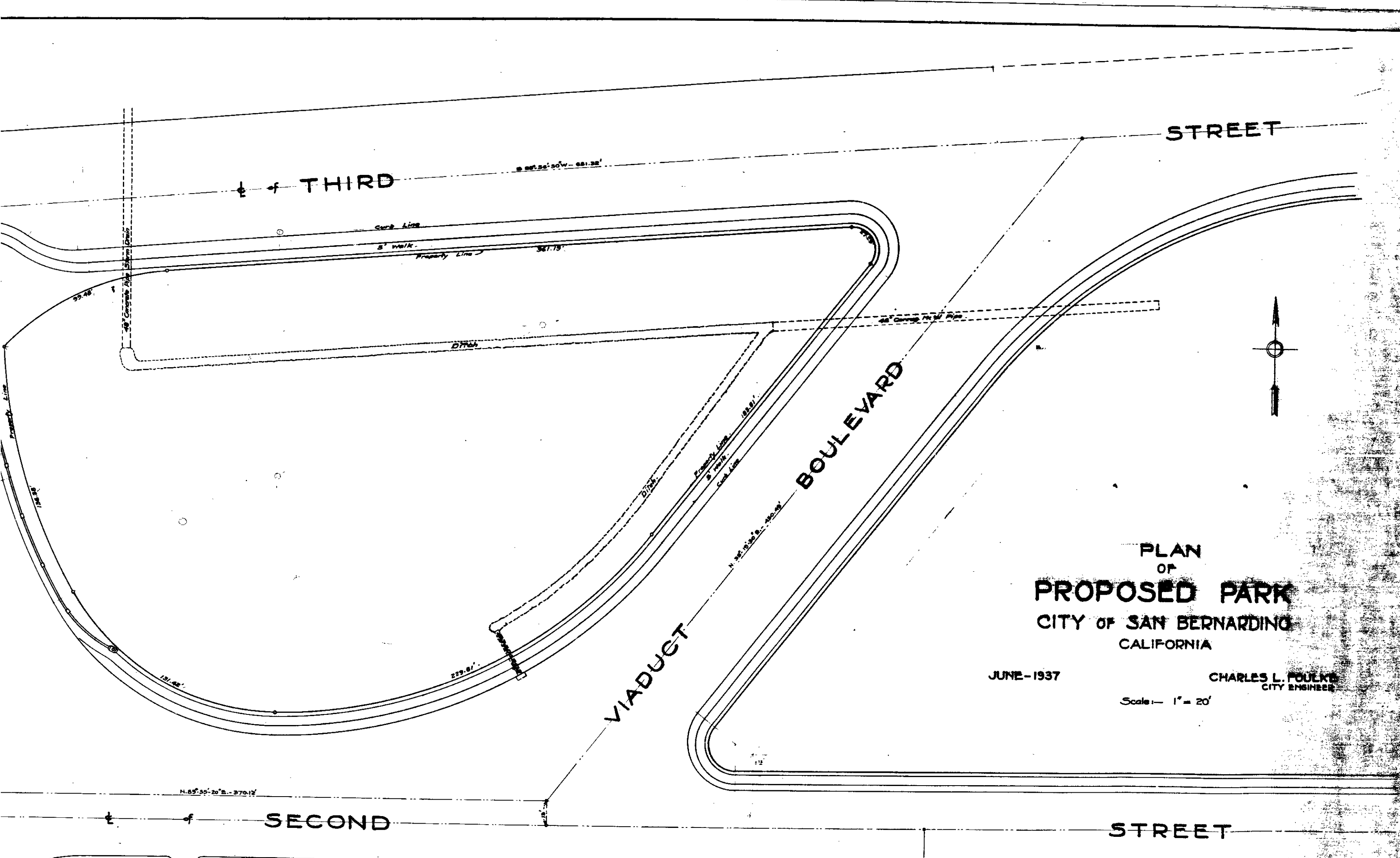


PLAN
OF
PROPOSED PARK
CITY OF SAN BERNARDINO
CALIFORNIA

JUNE - 1937

CHARLES L. FOLKE
CITY ENGINEER

Scale - 1" = 20'



PLAN
OF
PROPOSED PARK
CITY OF SAN BERNARDINO
CALIFORNIA

JUNE-1937

CHARLES L. FOLKE
CITY ENGINEER

Scale: 1" = 20'

SECOND

STREET

BOULEVARD

VIADUCT

THIRD

STREET